

Training event

Clinical Data Safety

The Emerging Challenge



FACULTY OF
**CLINICAL
INFORMATICS**

NHS
England

Monday 3rd April, 1 - 3.30 pm

Registration:
via NHS: [click here](#)
via SCSC: scsc.uk/e1000

Friday 21st April, 1 - 3.30 pm

Registration:
via NHS: [click here](#)
via SCSC: scsc.uk/e1001

Modern healthcare systems provide data that is used to make safety-critical decisions regarding patient-safety. Errors in, or incorrect use of such data, can cause harm to patients and adverse clinical outcomes. Ensuring the safe use of data is a complex challenge for the healthcare industry.

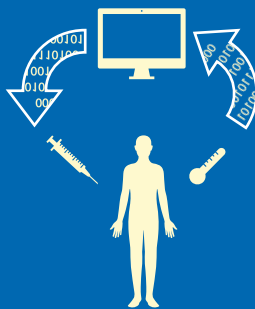
Accidents are happening...



There have been several clinical accidents and incidents where data, as distinct from purely software and hardware, has been the major cause.

The risks from data will only increase as our systems become more inter-connected, autonomous, and increasingly use data-intensive technologies, such as IoT, Artificial Intelligence, and Machine Learning.

Could your data become the cause of a clinical risk?



NHS safety standards for
Clinical risk management
DCB 0129
DCB 0160

You will learn how to:

- Assess your organisation's exposure to data risks
- Reduce the risk of your data causing harm
- Understand the SCSC Data Safety Guidance and NHS Standards for Clinical risk management
- Assure the safety of your data assets
- Use the data safety analysis tool RADISH

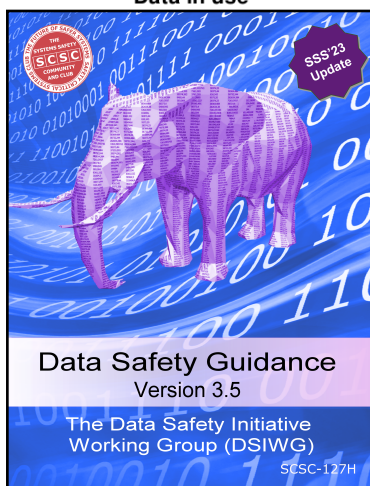
The SCSC Data Safety Guidance

The *Safety Critical Systems Club* (SCSC) have published the "Data Safety Guidance" (scsc.uk/scsc-127H) to address this problem.

The guidance captures best practice and describes a Data Safety Management Process, which can be integrated into an overall Safety Management System.



Caution
Data in use



The RADISH 🌱 Tool

Risk Assessor for Data Integrity and Safety Hazards (RADISH) is a software tool from Mission Critical Applications, to aid in the application of the SCSC guidance by a practitioner.

